



DAYLIGHTING INSPIRATION BOOK

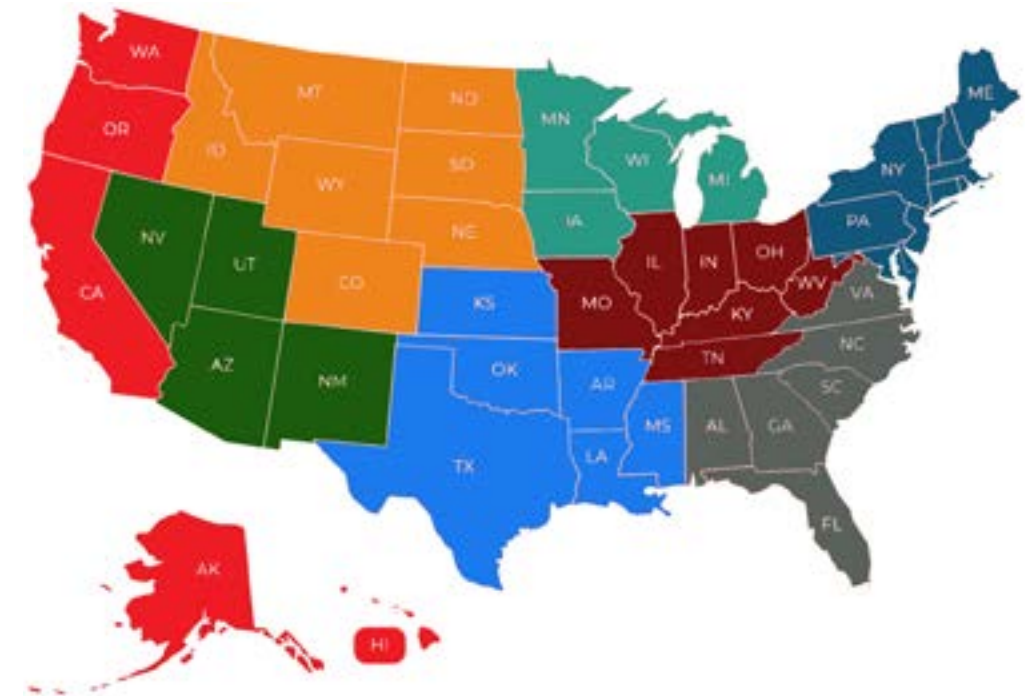
TRANSLUCENT SKYLIGHTS,
CANOPIES & WALL SYSTEMS



CONTENTS

p. 4-5 / **ABOUT MAJOR INDUSTRIES, INC.**

p. 6-13 / **SYSTEM OVERVIEW**



p. 12-59 / **PROJECT PHOTOS & SPOTLIGHT**

- **14-19** / WEST COAST (AK, CA, HI, OR, WA)
- **20-25** / NORTHERN ROCKIES & PLAINS (CO, ID, MT, ND, NE, SD, WY)
- **26-31** / SOUTHWEST (AZ, NM, NV, UT)
- **32-37** / SOUTH (AR, KS, LA, MS, OK, TX)
- **38-43** / UPPER MIDWEST (IA, MI, MN, WI)
- **44-49** / OHIO VALLEY (KY, IL, IN, MO, OH, TN, WV)
- **50-55** / SOUTHEAST (AL, DC, FL, GA, NC, SC, VA)
- **56-61** / NORTHEAST (CT, DE, MA, MD, ME, NH, NJ, NY, PA, RI, VT)

p. 62-63 / **APPLICATION GUIDE**

ABOUT



High-performance Custom Skylights, Canopies & Translucent Wall Systems that Fit your Needs & Budget

We're dedicated to making great daylighting solutions. It's really that simple, and has been since we started in 1980. From our plant in Wausau, Wisconsin, our team works hard every day to design and manufacture the best skylights, canopies and wall systems in the industry, and our repeat clients are proof of our focus on quality and service.

Our dedicated team of daylighting specialists will work with you from concept through installation, working along side you to find the right solution to your daylighting needs, and making sure your questions are answered along the way. We start by providing services like daylight modelling and structural calculations to make sure the system you receive fits your project needs. During the manufacturing process, our experienced team takes the time to ensure that parts are fabricated precisely and that materials are shipped safely and securely. And we'll work with our installers to assist with challenges on the job site. We do all these things because at Major, customer service isn't taken for granted - we know that each project is more than just the sum of its parts.

But while our custom designs can be eye-catching, we also know there are times when speed and simplicity are key. That's why we provide a wide range of Quick Ship™ and retrofit-ready products that can help solve your daylighting needs quickly and easily.

Not sure if your designs can become reality? Contact our sales team and let them work with you to come up with the best daylighting solution possible.

1980



Major Industries was founded in Wausau, Wisconsin, home to a wide range of well-known building product manufacturers and suppliers. Our community roots have taught us to strive to treat clients like our neighbors.



1993



After taking ownership of Major Industries in 1993, current President Wayne Toenjes made a commitment to both our customers and employees.



1998



Major expanded in 1998, and then again in 2001, bringing the manufacturing facility to a total of over 52,000 square feet. This additional space, along with state-of-the-art manufacturing systems, allows us to better serve our growing customer base.



2009



Major Industries was honored as the 2009 Small Business of the Year in Manufacturing from the Wausau Region Chamber of Commerce for its long-term success and commitment to the community.



2020 & BEYOND



No matter how our systems evolve and advance with new technologies, we will continue to promote the significant benefits of daylight to the environment, overall well-being, and the bottom line. And our commitment to customers will remain, as your project needs drive us to be a better and more responsive organization. We look forward to working with you for years to come!



MAJORSKYLIGHTS.COM
888-759-2678

DAYLIGHTING SYSTEMS OVERVIEW

GUARDIAN 275®

Our most versatile line of sandwich panel daylighting systems is available in skylight, wall system and canopy configurations, with numerous specialty options such as blast and hurricane protection, unitized configurations and more. Guardian 275® systems consist of an aluminum grid core and two Ultimate Series™ fiberglass reinforced polymer (FRP) face sheets that allow light to pass through while eliminating glare and blocking harmful UV rays - and they also offer a wide range of color and insulation options.

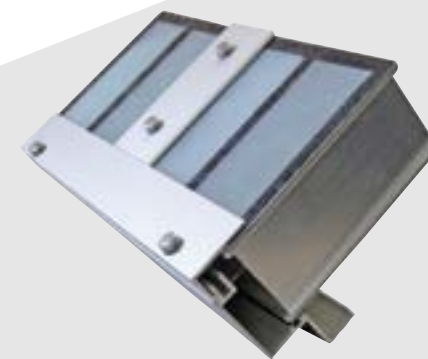
- Built-in moisture management with internal gutters and weep holes
- Great for both new and retrofit construction
- Ultimate Series™ face sheet with advanced composite resin system and erosion veil for durability in any environment
- Numerous sheet colors available
- EPDM gasketing and high-performance sealants
- 4", 2.75", and 1" thick panels and insulation options
- Skylights and wall systems are designed with a maximum allowable deflection of L/120 – creating a stronger and more watertight system
- Wall systems feature standard fastener covers for a clean and fastener-free look
- Translucent Adapter Panels (TAP) for retrofit applications
- Incorporate operable windows for ventilation and views
- Up to 20 year color change warranties available



Aksarben Village Retail Store Office – Omaha, NE, HDR, Guardian 275® Ridge Skylight



Home 2 Suites – Perrysburg, OH, Kaczmar Architects Inc, Guardian 275® Single Slope Canopy



DAYLIGHTING SYSTEMS OVERVIEW continued...



Barksdale Air Force Base — Bossier City, LA, Light-Basic™ Wall Systems



Light-Basic™ Pre-assembled Single Slope Skylights



LIGHTBASIC™

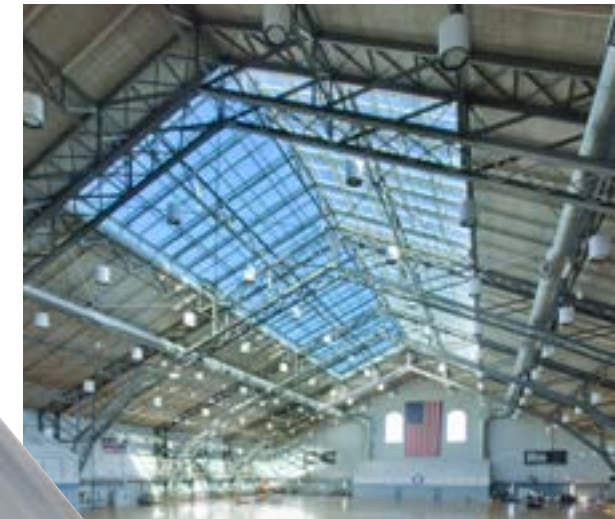
LightBasic™ wall systems and pre-engineered skylights consist of a simplified framing system and panels constructed of an aluminum grid core and two fiberglass reinforced face sheets that allow light to pass through while eliminating glare and blocking harmful UV rays. It's a unique blend of performance and price for buyers who demand an economical translucent daylighting system that will hold up under a variety of conditions.

- Available in wall and pre-engineered skylight configurations
- Durable fiberglass-reinforced face sheets provide soft, diffuse light
- 2.75" thick panels with optional translucent insulation for enhanced thermal performance
- Available in White and Crystal sheet colors
- 5 year color change and 10 year fiberbloom warranties standard

AUBURN® & AUBURN® E+

Auburn® skylights feature high-performance sealants and gasketing and built-in water management for long-term durability. They're also available in mixed glazed configurations that can incorporate Guardian 275® translucent panels or polycarbonate multi-wall to create a unique, eye-catching and functional design.

- Engineered systems feature integral screw races, providing superior anchorage and uniform load transfer
- Integral guttering for condensation control
- Engineered systems come standard with tubular rafters, which often eliminate the need for support tubes and provide a finished look
- E+ systems are flushed glazed and feature an unlimited pitch curb connection
- Pre-assembled single slope units available



Hartford Armory — Hartford, CT, Fletcher Thompson Architects, Auburn® Ridge Skylight



CLIMA-TITE™

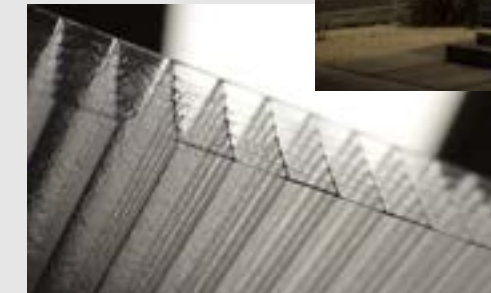
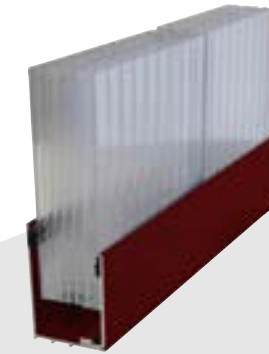
Clima-Tite™ features Ultimate Series™ face sheet technology along with pultruded fiberglass support members. Pultruded fiberglass has numerous advantages over aluminum, including dimensional stability, increased protection from temperature differences, and better corrosion resistance. Clima-Tite™ also has a unique snap-to-lock installation feature that saves labor costs and provides a clean, sleek look without unsightly fasteners.

- Excellent corrosion and UV resistance
- Low thermal conductivity
- 2.75" thick panels with insulation and numerous sheet color options
- No special handling or transportation requirements - paintable just like standard aluminum framing
- Window-wall systems available with single, double and triple-glazed glass options, low-E coatings, and more

ILLUMINPC™

IlluminPC™ features tongue-and-groove panel construction for easy installation and a clean, modern appearance. With panel U-factors of .19 and a wide range of color choices, they're also incredibly customizable. From a small clerestory to expansive wall sections, IlluminPC™ is a versatile and economical daylighting tool.

- 40mm (1.57 inch) panel thickness - with standard 19-11/16 inch widths, and up to 20 feet long
- Crystal and White sheet colors - with custom options available
- Excellent impact and hail resistance
- .19 panel u-factor
- Tongue-and-groove joints between panels for a clean and modern appearance + ease of installation
- UV inhibitors are co-extruded into the sheets for long-term durability



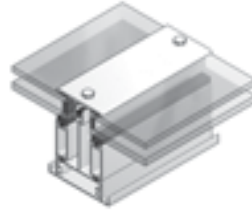
Music Street Residence & Studio — New Orleans, LA, Eley Guild Hardy Architects & Volume Zero, IlluminPC™ Wall System, Image © Richard Sexton

SPECIALTY SYSTEMS OVERVIEW



Northwest Houston AFRC - Houston, TX, Turner Ramirez Architects & Planners

MIXED GLAZED & MODULAR SYSTEMS



Guardian 275® panels can be used with a wide range of commercial window systems via adapters that allow us to accommodate all types of 2" to 2.75" windows and louvers, and provide seamless integration with 1" glass or 25mm polycarbonate multi-wall. Unitized systems are also available.

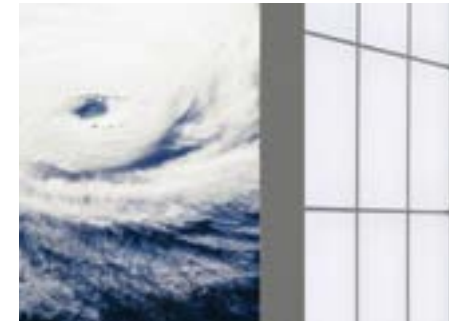


Zemmer Middle School - Lapeer, MI, French Associates

HURRICANE SYSTEMS

Guardian 275® hurricane systems can be used in 95% of the hurricane zones in North America, including most Florida counties and the Texas gulf coast, and can withstand winds up to 140 miles per hour. Extensive impact testing has also been conducted in conformance with ASTM E1886 and ASTM E1996 to ensure the highest level of performance.

Contact us for more information on our tough and dependable hurricane systems.



Holiday Inn Express - Panama City, FL, Guardian 275® Pyramid Skylight Replacement



REMOVABLE SKYLIGHTS

Guardian 275® and mixed glazed skylights can be configured with lifting hooks for drop-on installation or future building access. Typical applications include MRI centers and water treatment plants.



RENOVATE EXISTING WINDOWS/STOREFRONTS

Replacing outdated or worn glazing? Guardian 275® Translucent Adapter Panels are specially designed to allow a 2.75" panel to fit industry standard 1" glazing pockets, saving time and money during installation. We also manufacture 1" daylighting panels that provide diffuse natural light.



Battalion HQ - Ft. Richardson, AK, © Ken Graham Photography.com



MAJORSKYLIGHTS.COM
888-759-2678

SPECIALTY SYSTEMS OVERVIEW *continued...*



Above: Bennett Event Ctr – OKC, OK, Frankfurt Short & Bruza / At Right: Jim Kryshak Jewelers – Wausau, WI, Struct. Sys. of Wausau

EYE-CATCHING NIGHTTIME ILLUMINATION

No special lighting necessary (though you can experiment all you want!). The night sky becomes the perfect backdrop for the soft, illuminated glow of a back-lit Guardian 275® panel, making it perfect for highlighting a logo or signage to add visual impact.

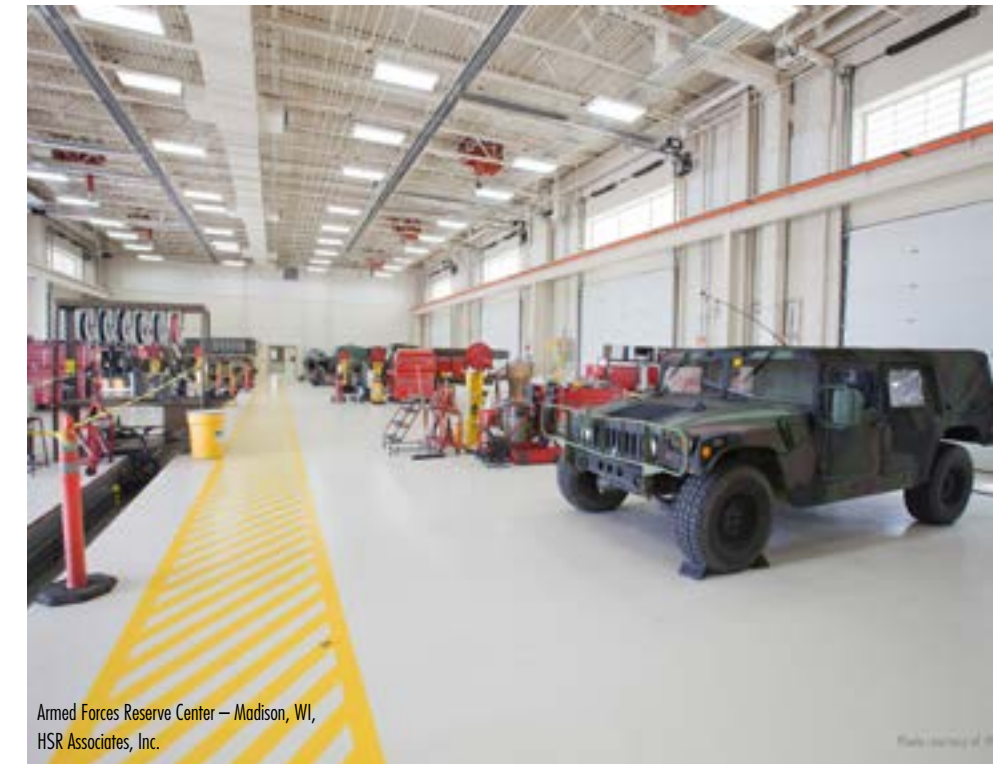


BLAST PROTECTION

After going through the most punishing blast tests in the translucent daylighting industry, Guardian 275® systems were found to meet or exceed the following anti-terrorism performance requirements:

- Department of Defense (DoD) - UFC 4-010-01 and ISC Security Design Criteria Level C loading
- US General Services Administration (GSA) – Condition “1”, Hazard Level “None”
- ASTM F1642-04 - Glazing/Glazing Systems Subject to Airblast Loading / AAMA 510-06 - Blast Hazard Mitigation for Fenestration Systems

For more details and high-speed video of the testing, visit majorskylights.com.



Armed Forces Reserve Center – Madison, WI, HSR Associates, Inc.



Meadowlark School – Sheridan, WY, TSP, Inc.

SPECTRA-GRID™ COLORED INSULATION

Our translucent insulation can be custom-colored to create dynamic impact or subtle, understated tones. It's the perfect low-cost solution for church designs needing a stained glass look, restaurants incorporating logo colors or learning facilities wanting to add school colors!

CUSTOM OVERLAYS

Unique designs can be added to enhance the standard grid patterns (shown on the next page), adding a decorative element to your daylighting project. Contact Major for additional details and options.



PRESSURE RELEASE

Guardian 275® wall panels can also be fitted with third-party certified fasteners that “relieve” sudden pressure surges by releasing the panels before structural damage occurs. Stainless steel safety lanyards keep panels attached to the framing, minimizing the risk to people and property.



Ft. Campbell, KY - Johnson Early Architects



MAJORSKYLIGHTS.COM
888-759-2678



WEST COAST

ALASKA, CALIFORNIA, HAWAII, OREGON, WASHINGTON



Linn-Benton Community College — Albany, OR, Soderstrom Architects
Guardian 275® Ridge Skylight



Hilton Garden Inn — Honolulu, HI, Pacific Asia Design Group,
Guardian 275® Ridge Canopy with End Walls



Muslim Education Trust Community Center — Tigard, OR, Otak Architects, LightBasic™ Wall System



Amtrak Locomotive Shop — Seattle, WA
TKDA Engineering, Architecture & Planning, Guardian 275® Wall Systems
Images © Francis Zera / zeraphoto.com

MAJORSKYLIGHTS.COM
888-759-2678

WEST COAST *continued...*



Rosetta — San Luis Obispo, CA, Garcia Architecture and Design,
Guardian 275® Wall System with Verti-Lite™ Grid Pattern



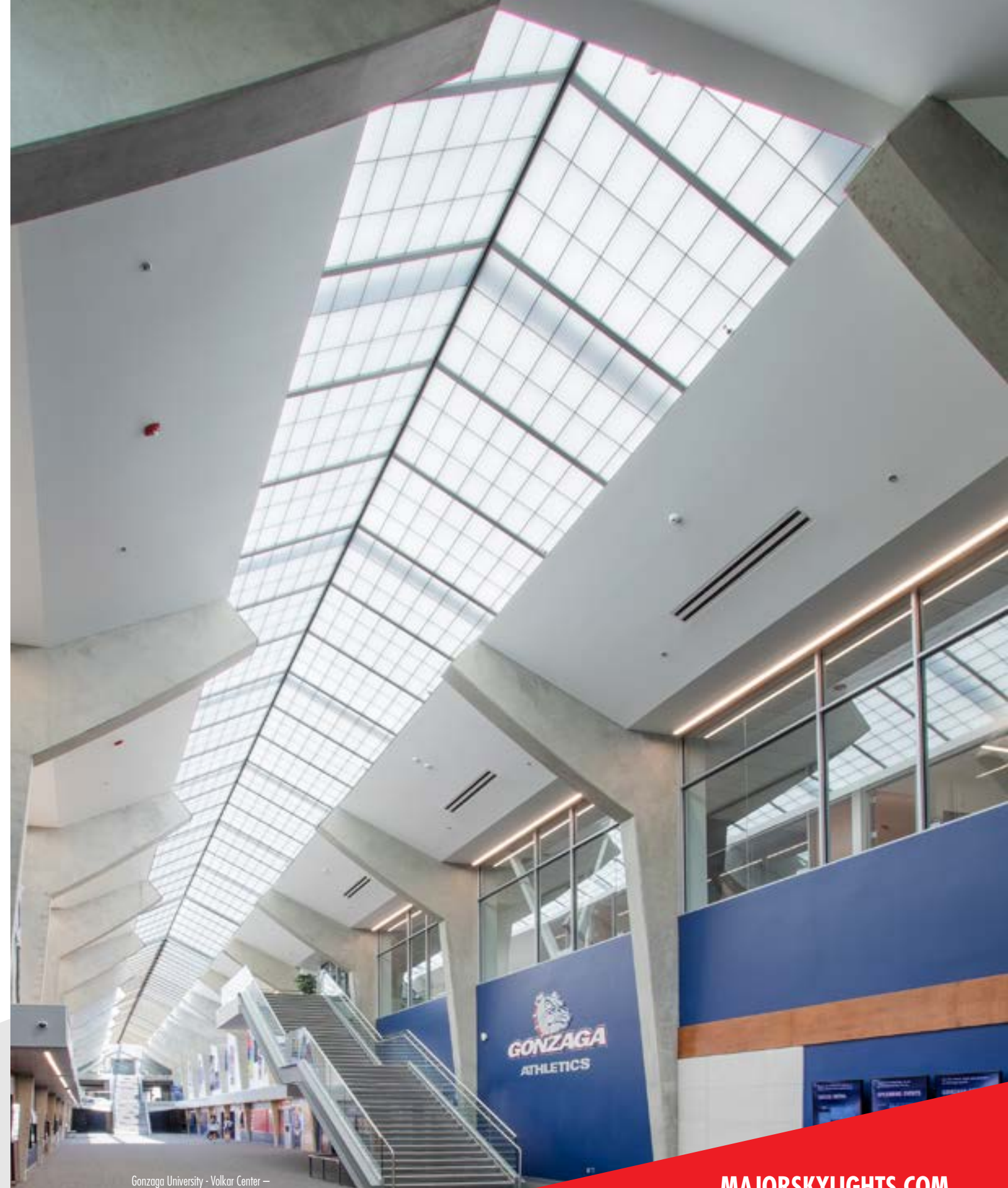
Simcoe Elementary School — Wapato, WA, Architects West, Guardian 275® Wall Systems
Image © Firefly Solutions



FY14 TEMF COF — Joint Base Lewis McChord, WA, US Army Corp of Engineers-Seattle Div., Guardian 275® Skylights



Bend-LaPine Elementary School — Bend, OR, Steele Associates Architects, Guardian 275® Translucent Wall System



Gonzaga University - Volkar Center —
Spokane, WA, ALSC Architects
Guardian 275® Ridge Skylight



MAJORSKYLIGHTS.COM
888-759-2678

WEST COAST *continued...*



Joint Base Lewis-McChord TEMF – Joint Base Lewis-McChord, WA
US Army Corps of Engineers
Guardian 275® Single Slope Canopy and Wall System



Cupertino High School – Cupertino, CA, Quattrocchi Kwok Architects, Guardian 275® Wall Systems



Redondo - Los Angeles, CA, AKA Architects – Los Angeles, CA, Guardian 275® and Glass Mixed Wall Panels



Ketchikan Shipyard – Ketchikan, AK, Kumin Associates, Guardian 275® Wall Systems

CASE STUDY:

THE PRISONER WINERY, ST. HELENA, CA

When the owners of The Prisoner Wine Company took over a 40,000 square foot winery near St. Helena, CA, they knew it needed to be a unique and experience-filled space that fit the company's name - and to blend a modern look with a more "stern" feel. MH Architects and Vonsaal Design Build brought this dark vision to life with exposed metal, cage-like seating for guests, a cellar-like interior space lit by a large skylight and even a graphite skeleton.

Richard Von Saal, of Vonsaal Design Build, stated in an article on interiordesign.net, that "I'd be lying if a retro-futuristic prison didn't come to mind." The dramatic use of light was also inspired by a Francisco Goya etching that the winery's owner received as a child, and that shows up on the company's wine labels. "This was a dream project," said Matt Hollis of San Francisco's MH Architects in a recent Napa Valley Register article. "They came to us and showed us the label and told us to be inspired by the Goya painting — that's not what you normally hear from a client. And Goya is amazing because of his use of natural light, and so we used that theme throughout."

The centerpiece of a social space called The Makery is an eight foot wide by 57 foot long Guardian 275® translucent panel skylight that fills the space with light while maintaining the focus on the other interior design highlights. Guardian 275® systems provide natural light without excessive solar heat gain or glare, allowing visitors to the space to spend additional time without feeling discomfort from the sun - which can be especially intense in California.

Let us work with you to find out how your innovative space can benefit from natural light.

Sources:

<https://www.interiordesign.net/projects/16116-mh-architects-and-vonsaal-design-lock-down-a-futuristic-look-at-the-prisoner-winery/>

https://napavalleyregister.com/community/calistogan/lifestyles/the-prisoner-winery-opens-with-evolutionary-concept/article_4fc08a49-5335-5734-bf82-3e2030390133.html

At Right: The Prisoner Wine Company – St. Helena, CA,
MH Architects, Guardian 275® Ridge Skylight
Image © Cesar Rubio Photography



MAJORSKYLIGHTS.COM
888-759-2678





Moorhead Recreation Center — Aurora, CO
Barker Rinker Seacat (BRS) Architecture
Guardian 275® Wall System

ROCKIES & NORTHERN PLAINS

COLORADO, IDAHO, MONTANA, NORTH DAKOTA, SOUTH DAKOTA, WYOMING



Campbell Memorial Hospital — Gillette, WY, Tractor Glass Company,
Guardian 275® Single Slope Canopy



South Dakota Children's Museum — Brookings, SD,
Architecture Incorporated, Auburn® Polygon Skylight



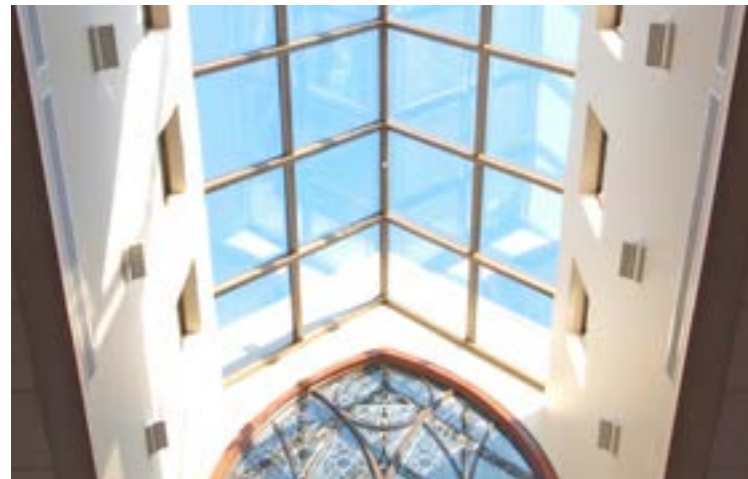
Parker Public Works Building — Parker, CO, RNL Design,
Guardian 275® Verti-Lite™ Wall System

MAJORSKYLIGHTS.COM
888-759-2678

ROCKIES & NORTHERN PLAINS *continued...*



Denver Water Operations Complex – Aurora, CO, RNL – Stantec, Guardian 275® Mixed Glazed Wall System



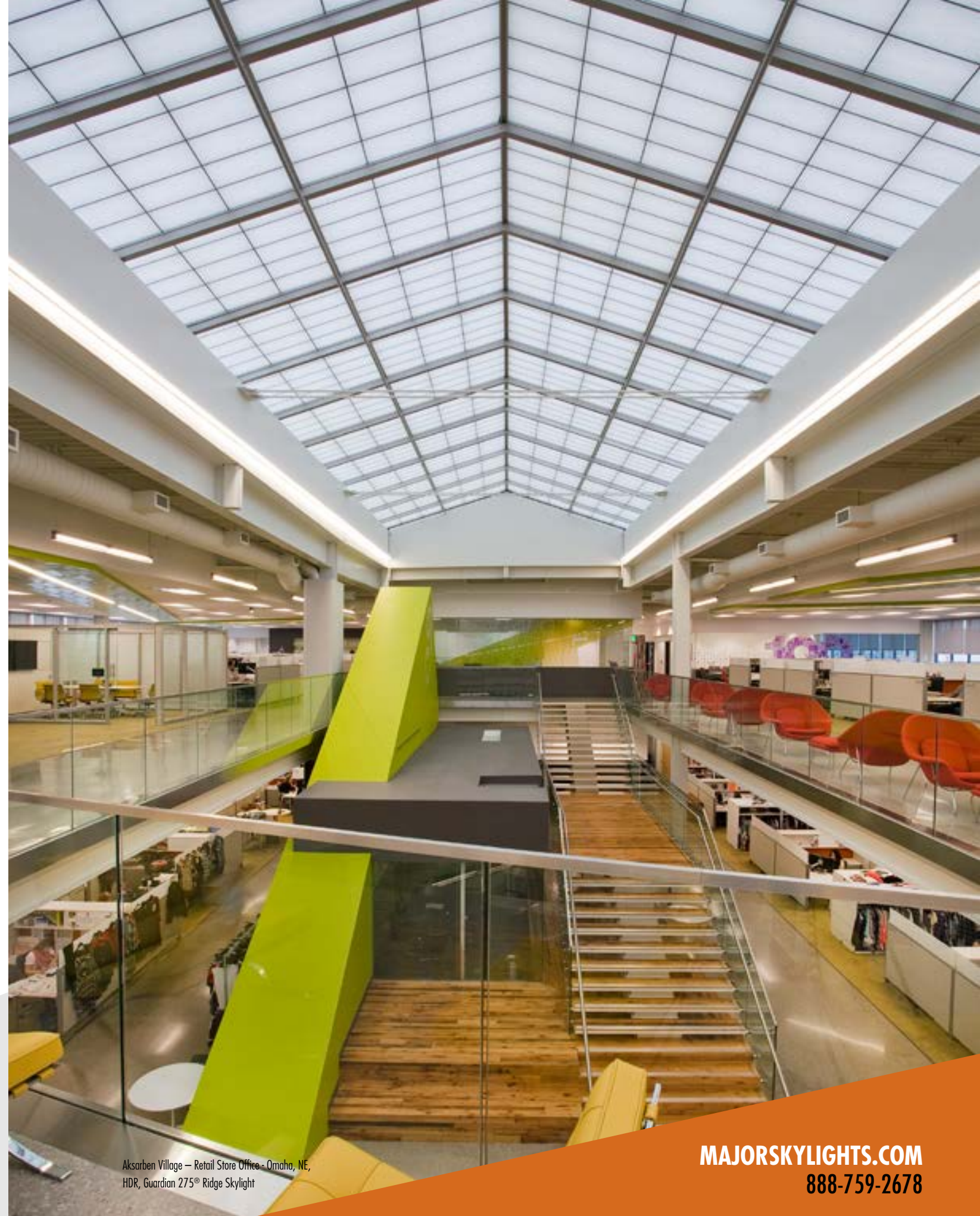
Saints Anne and Joachim Catholic Church – Fargo, ND, Zerr Berg Architects, Auburn® Ridge Skylight



Fitzsimmons Hyatt Hotel – Aurora, CO, TAAG Architects, Guardian 275® Pyramid Skylight



Meridian Public Safety – Meridian, ID, CSHQA, Guardian 275® Single Slope Canopy



Aksarben Village – Retail Store Office - Omaha, NE, HDR, Guardian 275® Ridge Skylight



MAJORSKYLIGHTS.COM
888-759-2678

ROCKIES & NORTHERN PLAINS

continued...



Colorado Springs Airport – Colorado Springs, CO, Van Sant Group, Guardian 275® Canopy Retrofit



Whitefish Emergency Services Center – Whitefish, MT, Grover & Company, Guardian 275® Pyramid Skylights



Moorhead Recreation Center – Aurora, CO, Barker Rinker Seacat, Guardian 275® Wall System



Jackson Jet Center – Boise, ID, Glancey Rockwell & Assoc., Guardian 275® Wall System

CASE STUDY:

START BUS MAINTENANCE FACILITY - JACKSON, WY

Taking some design cues from the natural beauty of the Rocky Mountains, the Southern Teton Area Rapid Transit (START) bus maintenance facility is a great blend of sustainable design and functionality, brightened by the use of Guardian 275® translucent wall panels.

START's new facility, designed by RNL Design (now Stantec) with site planning assistance from Maintenance Design Group, includes administrative offices, interior bus storage for the fleet of 36 buses, a nine-bay fleet maintenance facility, in-line fueling and drive-thru bus wash at the entry to the bus storage area, and seven units of employee housing. The project is designed sustainably and includes features such as extensive use of natural daylighting, green roof, energy-efficient building envelope, and radiant floor heating.

The facility is also unique because of its location on the edge of a migratory wildlife corridor. Factors like excessive noise and light pollution were key considerations during the building's design, with the goal of minimizing disruptions to wildlife patterns. According to Stantec, "Blending the need for functionality in the facility with environmentally conscious design makes this building smart — from the inside out." The goal of the project was LEED® Gold certification, and the facility has won numerous design awards, including the AIA Colorado Award of Merit and AIA Denver Award of Merit.

Sources:

<https://www.stantec.com/en/projects/united-states/projects/s/southern-teton-area-rapid-transit-bus-operations-and-maintenance-facility>

<https://maintenancedesigngroup.com/projects/town-of-jacksonstart-bus-facility-2/>



START Bus Maintenance Facility – Jackson, WY, RNL Design/Stanec, Guardian 275® Wall System





SOUTHWEST

ARIZONA, NEVADA, NEW MEXICO, UTAH



Turquoise Trail School – Santa Fe, NM, Garrett Smith Limited, Guardian 275® Wall System



Southwest Cheese – Clovis, NM, NPSR Architects, Guardian 275® TransCURVE™ Canopies



AMARG Hangar – Tucson, AZ, AECOM, Guardian 275® Wall System

MAJOR INDUSTRIES
Las Cruces High School – Las Cruces, NM
Alley Associates Architects and Planners
Guardian 275® Ridge Skylight

MAJORSKYLIGHTS.COM
888-759-2678

SOUTHWEST *continued...*



Young Living HQ — Lehi, UT, Scholz Architects,
Guardian 275® Single Slope Skylight



Turquoise Trail School — Santa Fe, NM, Garrett Smith Limited, Guardian 275® Skylight with End Wall



P535 Hangar — Yuma, AZ, NAVFAC, Guardian 275® Wall System with Louvers



New Mexico Tech Geology — Socorro, NM,
VHGA, Guardian 275® Ridge Skylight



MAJORSKYLIGHTS.COM
888-759-2678

SOUTHWEST *continued...*



Santa Fe Community College Trades & Advanced Technology Center
— Santa Fe, NM, Lloyd & Associates Architects,
Guardian 275® Skylight



Santa Fe Community College Trades & Advanced Tech. Center — Santa Fe, NM,
Lloyd & Associates Architects, Guardian 275® Wall System



White River Clinic — Whiteriver, AZ, BWS Architects, Guardian 275® Single Slope Canopy



La Vida Llena — Carter Hall - Albuquerque, NM, Guardian 275® Skylight

CASE STUDY:

TRES VOLCANES SCHOOL - ALBUQUERQUE, NEW MEXICO

Tres Volcanes Community Collaborative School, named after three inactive volcanos near the school's location, is the second incarnation of a new and collaboration-focused kindergarten through 8 model designed by Jon Anderson Architecture and built by Bradbury Stamm Construction, and is a much-needed addition to Albuquerque's growing community.

The school makes use of biophilic design by using a grapevine for inspiration, which according to Jon Anderson Architecture replicates "a stem nourishing a series of grape leaves which in themselves are micro-communities of cells." The main corridor, or "stem", provides access to differentiated learning areas which offer 74 flexible learning spaces designed to provide learning opportunities for any type of group — large or small. The "stem" that links these learning spaces also provides space for the school's mechanical systems, as well as a large grouping of rooftop solar panels.

The Tres Volcanes Community Collaborative School also echoes its surroundings through the use of dark grey and white exterior, mirroring the dark basalt and lighter colored mineral deposits in the landscape. The ever-present sunlight of the Southwest is also utilized, as the school utilizes a number of daylighting systems, including Guardian 275® wall panels, to bring in natural light and help offset artificial lighting costs. The Guardian 275® translucent wall panels help to brighten some otherwise dark corridors, and to bathe the gymnasium space in diffuse sunlight. Translucent panels are an excellent tool for hot and sun-filled environments as they provide built-in shading of direct sunlight, block damaging UV, and can be insulated for added control of solar heat gain. The wide variety of energy-saving tactics used in the school have also helped Tres Volcanes target LEED® Gold certification, and win the 2019 Elevate Merit Award from the New Mexico Chapter of the American Institute of Architects.



Tres Volcanes School — Albuquerque, NM, Jon Anderson Architecture,
Guardian 275® Mixed Glazed Wall System,
Images © Kirk Gittings Photography





MAJOR INDUSTRIES
 University of the Incarnate Word Student Center – San Antonio, TX
 McChesney/Bianco Architecture
 Guardian 275® Ridge Skylight with End Walls

THE SOUTH

ARKANSAS, KANSAS, LOUISIANA, MISSISSIPPI, OKLAHOMA, TEXAS



Southwest Airlines Credit Union – Dallas, TX, Guardian 275® Skylight Retrofit



Music City Mall – Odessa, TX, Guardian 275® Skylight Retrofit



Barksdale Air Force Base – Bossier City, LA, Light-Basic™ Wall Systems

MAJORSKYLIGHTS.COM
 888-759-2678

THE SOUTH *continued...*



Music Street Residence & Studio — New Orleans, LA,
Eley Guild Hardy Architects & Volume Zero,
IlluminPC™ Wall System, Image © Richard Sexton



Forrest Orthopedic Center — Hattiesburg, MS, Davis Stokes Collaborative, Guardian 275® Canopy



Trinity Church — Lubbock, TX., Lee Architects, Guardian 275® Wall System with Staggered Shoji Grid Pattern
Image Courtesy of Lee Architects



Bennett Event Center/OK State Fairgrounds — Oklahoma City, OK, Frankfurt Short & Bruza, Guardian 275® Wall System



Hillcrest Hospital — Tulsa, OK,
Guardian 275® Skylight Replacement

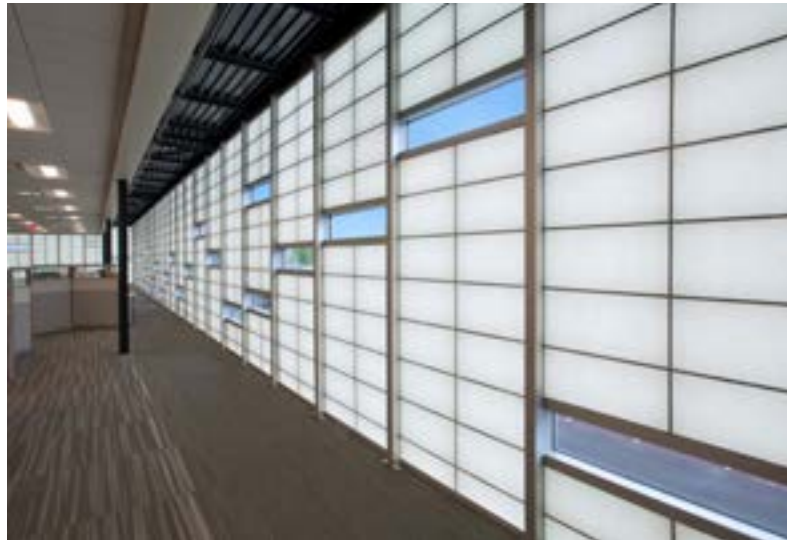


MAJORSKYLIGHTS.COM
888-759-2678

THE SOUTH continued...



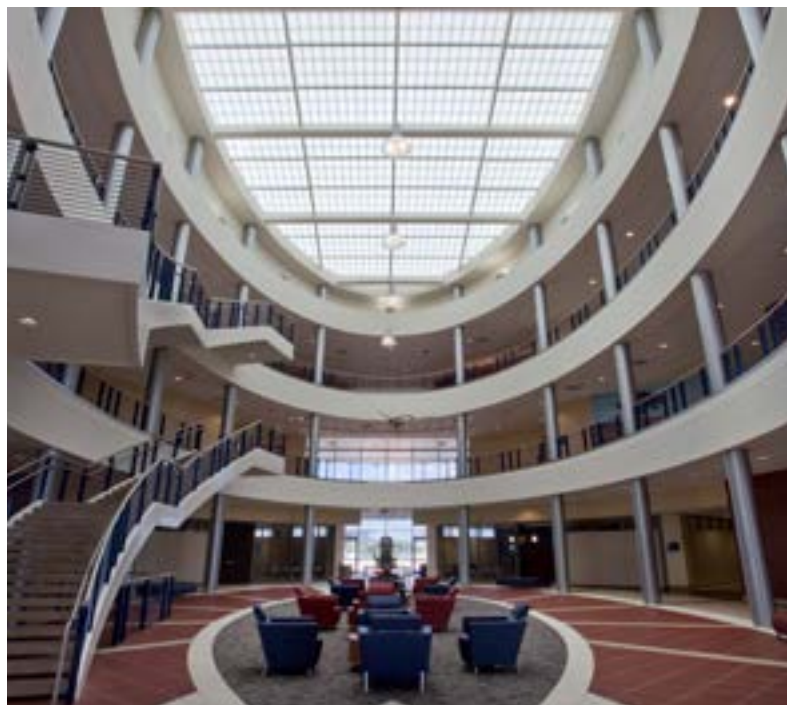
Austin Community College – Highland Mall - Austin, TX,
Barnes Gromatzky Kosarek Architects,
Guardian 275® Single Slope Skylight



Neurosurgery and Spine Consultants – San Antonio, TX, JMS Architects and Insite Architects,
Guardian 275® Wall System with Fixed Glass



Oklahoma State University - Cooper Engineering Lab – Stillwater, OK, Frankfurt Short Bruza, Guardian 275® Wall System



San Jacinto C. C. Allied Health Sciences South – Houston, TX, Bay Architects, Inc., Guardian 275® Single Slope Skylight

CASE STUDY:

EXPO SQUARE - BRONCO BARN & RANGER ARENA - TULSA, OK

Tulsa County Expo Square has long been an event hub for the area, playing host to equine events, concerts and various livestock and animal-related shows, as well as hosting the Tulsa State Fair. But while some expo facilities are content with dark spaces and limited functionality, GH2 Equine Architects, A Specialty Practice of GH2 Architects, LLC, when tasked with creating a barn and warm-up arena on the grounds, were determined to create a bright, welcoming facility that would attract visitors from around the country.

Bronco Barn and Ranger Arena, the two new intertwined spaces at Expo Square, create a nearly 130,000 square foot complex that includes 384 stalls for horses and livestock, 10 wash stations, a 2,000 square foot warmup arena, offices for veterinary and exhibitor services, and a viewing balcony overlooking the adjacent Fair Meadows outdoor racetrack, and more.

The buildings feature copious amounts of natural light - a main goal for the designers. "The building envelope design was carefully evaluated to explore opportunities for maximizing daylighting opportunities and to create a healthy stable environment and a comfort level for people and horses that will occupy the spaces for extended periods", according to GH2 Equine Architects, A Specialty Practice of GH2 Architects, LLC. "The use of translucent glazing materials is key in spaces such as this, which are occupied by horses and livestock, to prevent harsh shadows from being projected on the ground plane that the animal may have an adverse reaction to when circulating through the space."

Both the Bronco Barn and Ranger Arena get a fair amount of light during daytime hours from Guardian 275® translucent panel wall systems that run along each side of raised monitor roof sections. According to GH2 Equine Architects, "the siting of the building afforded the opportunity to incorporate clerestories utilizing translucent glazing materials to fill the arena and stall areas with daylighting to allow energy efficiency by not having to operate light fixtures full time during occupancy, and to enhance the quality of the space."

County officials see the project as more than just another horse barn or show arena. "This isn't going to be just another barn at Expo Square," stated County Commissioner John Smaligo in a 2018 Tulsa World news article. "It will truly be a showplace that our community can take pride in."

Sources:

Tulsa World News: https://www.tulsaworld.com/news/local/government-and-politics/new-million-barn-at-expo-square-will-compete-for-best/article_65cfa2ee-2503-5197-9c4b-58ef9e23e99e.html

Business View magazine – <https://businessviewmagazine.com/expo-square-small-mighty/>

GH2 Equine Architects, A Specialty Practice of GH2 Architects, LLC

Images at Right:

Expo Square Arena – Tulsa, OK, GH2 Equine Architects, a Specialty Practice of GH2 Architects, LLC, Guardian 275® Wall Systems,

Images © Yellow Dog Design Works, LLC





Adrian College Peele Center - Adrian, MI,
Collaborative Inc., Guardian 275® Single Slope Skylight

UPPER MIDWEST

IOWA, MICHIGAN, MINNESOTA, WISCONSIN



Lac Vieux Desert Health Center Clinic – Watersmeet, MI, DSGW Architects,
Guardian 275® Ridge Skylight with End Walls



University of Michigan Ross Athletic Center / Indoor Track Facility – Ann Arbor, MI,
TMP Architecture - Associated firm: Sink Combs Dethlefs (now Perkins+Will),
Guardian 275® Wall System



University of Wisconsin Goodman Softball Training Facility – Madison, WI,
Potter Lawson Architects, Guardian 275® Wall System

MAJORSKYLIGHTS.COM
888-759-2678

**UPPER
MIDWEST** *continued...*



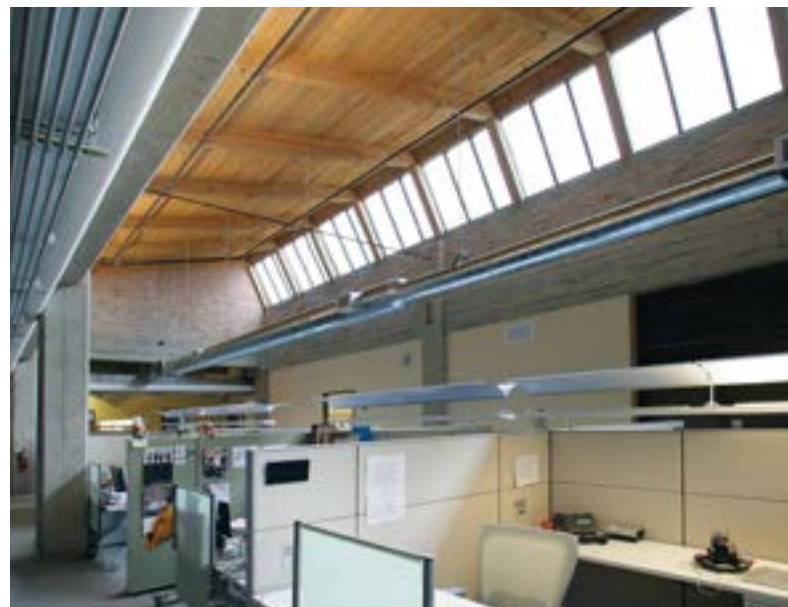
Bank of Prairie du Sac – Prairie du Sac, WI
Brink Kolberg & Associates
Guardian 275® Ridge Skylight



Olbrich Botanical Gardens – Madison, WI, Dimension IV Design Group, Guardian 275® Hip Ridge Skylight



Jim Kryshak Jewelers – Wausau, WI, Structural Systems of Wausau, Guardian 275® Wall System



C-K Advertising Offices – Milwaukee, WI, Kahler Slater Architects, Auburn® Single Slope Glass Skylight



Bernard A. Greenheck Education Center – Schofield, WI
Ellis Stone Construction
Guardian 275® Single Slope Canopy



MAJORSKYLIGHTS.COM
888-759-2678

**UPPER
MIDWEST** *continued...*



Festival Foods – Janesville, WI, Somerville Architects, Auburn® Hip Ridge Skylights



Zemmer Middle School – Lapeer, MI, French Associates Architects, Auburn® Mixed Glazed Ridge Skylight with End Walls



Dept. of Motor Vehicles – Waukesha, WI, Architects Group Ltd, Guardian 275® Wall System



University Parking Garage – Ann Arbor, MI, Walker Parking Consulting, Guardian 275® TransCURVE® Canopy

CASE STUDY:

RIPON COLLEGE WILLMORE ATHLETIC CENTER - RIPON, WI

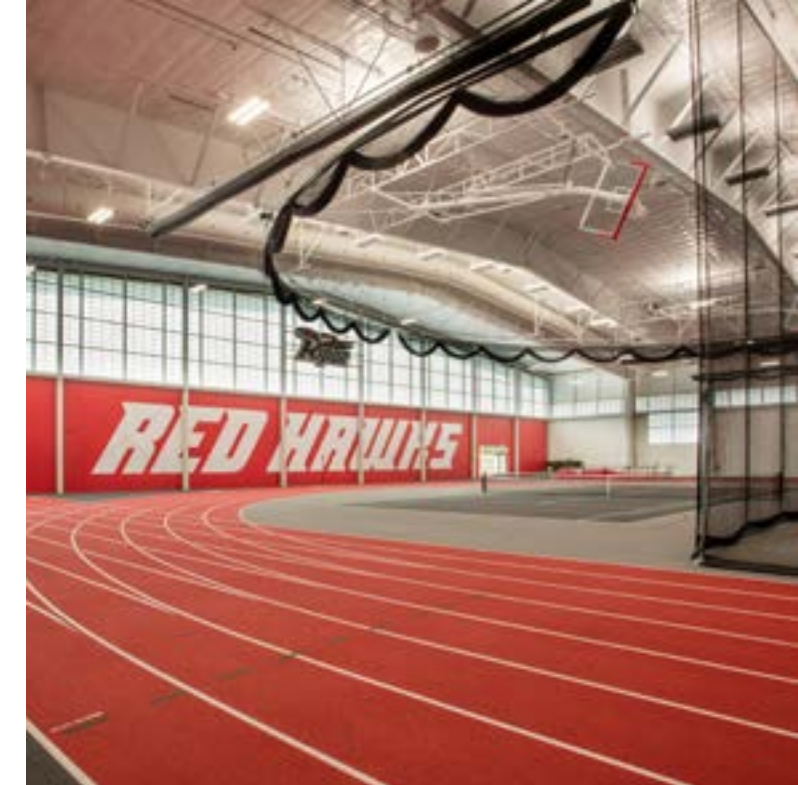
Ripon College, a liberal arts college in central Wisconsin, recently upgraded its athletics, health and wellness facilities with the expansion and renovation of what's now the new Willmore Center, a \$22 million project designed by Kahler Slater Architects that will house the college's athletic and exercise science departments and is home to many of their athletic teams including basketball, volleyball, swimming and indoor track and field.

"The Willmore Center will be a new hub of campus life, an open and bright space that is alive with activity every day, not just on game days," said Adam Bastjan, a principal associate with architecture and design firm Kahler Slater. "The size and quality of the facility and the amenities it offers rival those typically only found at much larger schools."

A new 64,200-square-foot field house, with multi-purpose performance courts and an NCAA regulation-size indoor track plus areas for jump and field events, is one of the main focuses of the expansion, and the space is filled with natural light via numerous sections of Guardian 275® wall panels. The panels wrap around the corners of the facility, providing athletes with glare-free natural light, while also giving the space an open and welcoming feel. Besides spaces for college athletes, the facility was also designed with the community in mind, as it's open to community members, local high schools and summer camp programs.

Sources:

<https://www.killreporter.com/story/news/2017/10/08/ripon-college-celebrates-opening-22-million-willmore-center/740920001/>
<https://www.kahlerslater.com/expertise/sports-and-recreation/ripon-college-athletic-wellness-center>



Ripon College – Willmore Athletic Center - Ripon, WI, Kahler Slater Architects, Guardian 275® Wall System



MAJORSKYLIGHTS.COM
888-759-2678



Taylorville Elementary School — Taylorville, KY,
Sherman Carter Barnhart Architects, Guardian 275® Wall System
Image by Phebus Photography

OHIO VALLEY

ILLINOIS, INDIANA, KENTUCKY, MISSOURI, OHIO, TENNESSEE, WEST VIRGINIA



Miami U. of Ohio Indoor Sports Center — Oxford, OH, RATIO Architects, Guardian 275® Wall System



Howard County Community Oncology Center — Kokomo, IN, Vintage Archronics, Auburn® Pyramid Skylight



Mandel Jewish Community Center — Beachwood, OH,
Bialosky and Partners, Guardian 275® TransCURVE™ Skylight

MAJORSKYLIGHTS.COM
888-759-2678

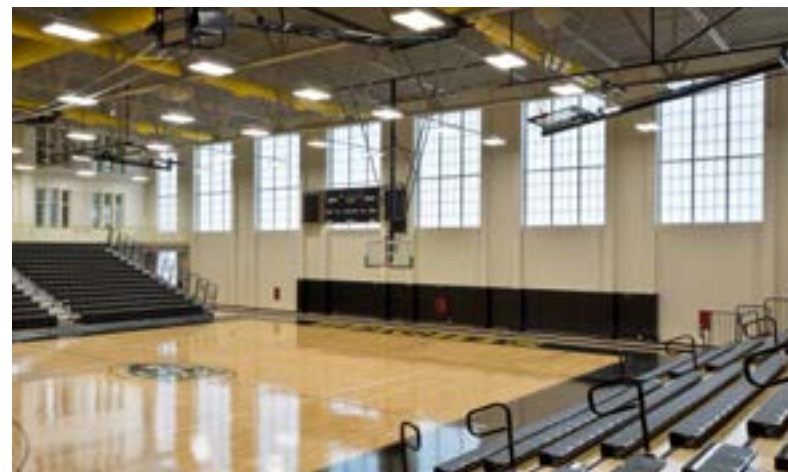
OHIO VALLEY *continued...*



BSU Geothermal Plant – Muncie, IN., MSKTD & Associates, Inc., Guardian 275® Wall System



Riverview Westfield Medical Center – Westfield, IN, American Structurepoint, Guardian 275® Single Slope Canopy



Cleveland Heights School – Cleveland Heights, OH, BSHM Architects Inc., Guardian 275® Wall System



Ohio University - Walter Fieldhouse – Athens, OH., Braun & Steidl Architects, Guardian 275® Wall System, Image by Cory Klein Photography



The Atrium of Anna Maria – Aurora, OH., Herman Gibans Fodor, Inc., Guardian 275® Ridge Skylight



MAJORSKYLIGHTS.COM
888-759-2678



Barkley Elementary School — Ft Campbell, KY, US Army Corp of Engineers, Guardian 275® Wall System



Roy Kidd Stadium at Eastern Kentucky University — Richmond, KY, Murphy Graves Trimble Architects, Guardian 275® Wall System with Verti-Lite™ grid pattern



Private Residence — IL, Auburn® Ridge Skylight



Home 2 Suites — Perrysburg, OH, Kaczmar Architects, Guardian 275® Single Slope Canopy
Image courtesy of Kaczmar Architects

CASE STUDY:

BROWNSBORO HOSPITAL PARKING RAMP - LOUISVILLE, KY

While we often think of canopies as being plain and utilitarian, they can also become eye-catching design elements. This month we're taking a quick look at a unique canopy design for the new Norton Brownsboro Hospital in Louisville, Kentucky (scheduled to open in 2020 - you can read more about the project here). Besides a new 172,000 square-foot tower and the renovation of an additional 44,000 square feet of existing space, the hospital will also be getting a new parking structure, designed by DesignGroup, that's complete with a few strikingly angular canopy designs over the stairways.

The Guardian 275® translucent panel systems twist over the corners of the structure and cap the stairwells, allowing for protection from rain and snow while still allowing them to remain well lit during daytime hours. While a standard canopy overhead would shield some precipitation and provide some protection from the sun, the Norton Brownsboro Hospital ramp design goes a step beyond, reaching vertically towards the ground to protect from driving rain and wind. The DesignGroup's unique canopies also serve another purpose - clearly calling out entry and exit points for visitors, not to mention providing some additional visual interest.

With their lightweight design that requires minimal structure, as well as multiple configuration options, Guardian 275® systems are an excellent solution for one-of-a-kind daylighting systems. From angular canopies to curving skylights to mixed glazed wall systems, we will work with you to find a solution to your toughest daylighting challenges.



Norton Brownsboro Hospital Parking Ramp — Louisville, KY, DesignGroup, Guardian 275® Custom Canopy , Images courtesy of Adam Olson - OAP



MAJOR
INDUSTRIES

Foley Event Center — Foley, AL
Goodwin Mills & Caywood, Inc.
Guardian 275® Wall System

SOUTHEAST

**ALABAMA, FLORIDA, GEORGIA, NORTH CAROLINA, SOUTH CAROLINA,
VIRGINIA, WASHINGTON D.C.**



Georgia Public Broadcasting — Atlanta, GA, Abri Design Studio,
Guardian 275® Ridge Skylight with End Wall



Above: U. of Georgia Ramsey Center Skylight Replacement — Athens, GA,
Guardian 275® Hip Ridge Skylight

At Left: Julian S. Carr Building @ Durham School of the Arts — Durham, NC
Ratio Architects, Guardian 275® Ridge Skylight

MAJORSKYLIGHTS.COM
888-759-2678

SOUTHEAST *continued...*



Holiday Inn Express – Panama City, FL,
Guardian 275® Pyramid Skylight Replacement



Hometrust Bank – Clyde, NC, Guardian 275® TransCURVE™ and Pyramid Skylight Replacement



Scott Lake Baptist Church – Lakeland, FL, Guardian 275® Wall System



Eisenhower Avenue Fire Station – Alexandria, VA, Wheeler Goodman Masek Architects, Guardian 275® Wall System



University of Florida Indoor Practice Facility – Gainesville, FL,
Davis Architects, Guardian 275® Wall System

MAJORSKYLIGHTS.COM
888-759-2678



Shenandoah Valley Airport – Weyers Cave, VA,
Guardian 275® Pyramid Skylight Replacement



Shaw Library – Washington D.C., Davis Brody Bond Aedas, Guardian 275® Mixed Glazed Wall System



Mew Manchester High School – Douglasville, GA, Southern A&E, Guardian 275® TransCURVE™ Canopy

CASE STUDY:

VIRGINIA TECH INDOOR PRACTICE FACILITY, BLACKSBURG, VA

When Virginia Tech University was looking to build a new indoor practice facility on campus, they turned to HKS Architects and the design-build team at W.M. Jordan Company for help in creating a large, welcoming and inspiring space for an array of sports teams from baseball to football and lacrosse. The facility they created, beyond achieving LEED® Silver certification, also blends in with other campus facilities and has become a centerpiece of the University.

Recently dedicated as the Beamer-Lawson Indoor Practice Facility, in honor of the football team's former head coach Frank Beamer and a gift from the Lawson family, the facility is monumental at 200 feet wide, 400 feet long and 85 feet high. The scale of the building is so large, in fact, that the White House can fit in the volume of the space. The facility also features roll up doors for protection against inclement weather, high bay sports lighting, and multiple platforms for coaches and videographers to survey the fields - both inside and out.

Perhaps the most striking feature of the facility are the large sections of Guardian 275® translucent wall systems that provide soft, diffuse light and minimize the need for artificial lighting during daytime hours. The Guardian 275® wall system chosen for this project also features a Verti-Lite™ vertical grid pattern, providing a simplified and classical look.

If your next athletic facility project demands natural light, consider Guardian 275® translucent systems - they're durable, lightweight, easy-to-install and provide athletes and spectators with the glare-free light they deserve.

Sources:

<https://www.wmjordan.com/pl/vt-indoor-athletic-training-facility/>

<https://www.hksinc.com/our-news/articles/virginia-tech-previews-indoor-athletic-training-facility/>



Virginia Tech University Indoor Practice Facility – Blacksburg, VA,
H K S Inc., Guardian 275® Wall System

Images by Boyd Peaman Photography





Carver Elementary School — Carver, MA, HMFH Architects, Inc
 Guardian 275® Mixed Glazed Wall System,
 Image © Ed Wanssek

NORTHEAST

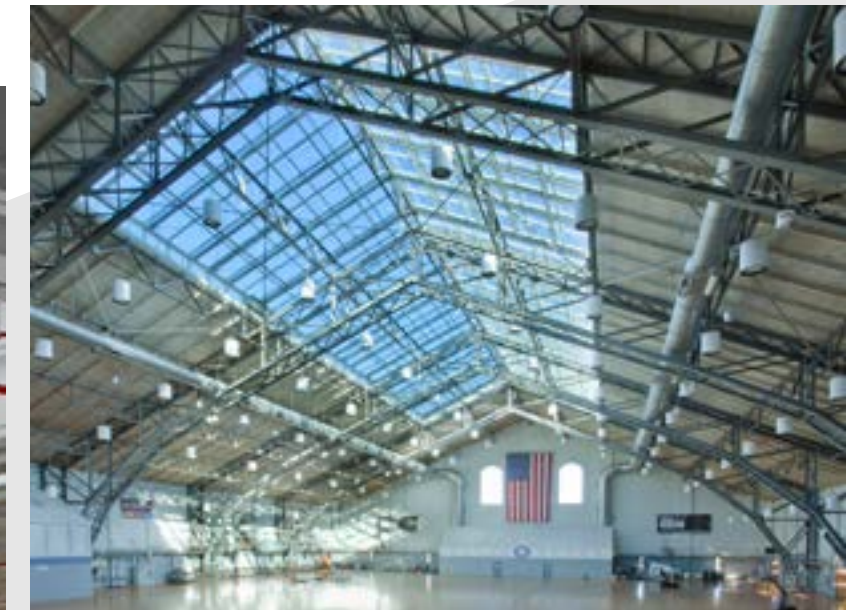
CONNECTICUT, DELAWARE, MAINE, MARYLAND, MASSACHUSETTS, PENNSYLVANIA, NEW HAMPSHIRE, NEW JERSEY, NEW YORK, RHODE ISLAND, VERMONT



NY State Fairgrounds Exposition Center — Syracuse, NY
 QPK Design, LLP, Guardian 275® Wall Systems



LANta Bus Facility — Allentown, PA,
 Gannett Fleming Inc., Guardian 275® Ridge Skylight



Hartford Armory — Hartford, CT,
 Fletcher Thompson Architects, Auburn® Ridge Skylight

MAJORSKYLIGHTS.COM
 888-759-2678

NORTHEAST *continued...*



C130J — Bradley Air Force Base, CT, Guardian 275® 4" Wall System



Washington County Humane Society — Hagerstown, MD, BFM Architects, Guardian 275® TransCURVE™ Skylight



Montour Elementary School — McKees Rocks, PA, Architectural Innovations, Guardian 275® TransCURVE™ Skylight



Buffalo General Medical Center — Buffalo, NY, C & S Companies, Guardian 275® TransCURVE™ Canopy



Phillips Exeter Academy — Exeter, NH
Architectural Resources Cambridge, Inc.
Guardian 275® Wall Systems
Images © Robert Umenhofer Photography

MAJORSKYLIGHTS.COM
888-759-2678



NORTHEAST *continued...*



Baystate Noble Hospital – Springfield, MA,
Steffian Bradley Architects, Guardian 275® Single Slope Canopy



Mt. Airy Casino Pool – Mount Pocono, PA, Hemmler + Camayd Architects, Guardian 275® Ridge Skylight



William J. Hughes Technical Center Renovation – Egg Harbor Township, NJ, Guardian 275® Single Slope Skylights



Barrette Outdoor Living – Galloway, NJ, SOSH Architects, Guardian 275® Wall System

CASE STUDY:

NORTHERN ESSEX COMMUNITY COLLEGE DIMITRY BUILDING RENOVATION - LAWRENCE, MA

The Northern Essex Community College (NECC) in Lawrence, MA recently unveiled a \$6.5 million renovation of the college's John R. Dimitry Building; and the transformation – lead by Perry Dean Rogers Partners Architects – is a bright one! Named after the college's second president who served as a major catalyst in the establishment and expansion of the Lawrence campus, the reconditioned Dimitry Building now features new windows, siding, parking space, and a striking new skylight from Major Industries illuminating the building's common area.

Doors to the Dimitry Building reopened to students and staff just in time for the 2019 fall semester as temporarily relocated dental assisting programs, early childhood education courses, and other valuable resources returned to the now sunlit space. With over 8,500 students enrolled in NECC's 60 plus associate and certificate programs and over 2,600 more participating in one or more of the college's hundreds of noncredit courses, the primary purpose of this renovation was to provide these students with a positive learning environment. And few architectural elements are as beneficial to education as sunlight exposure.

Studies show that access to natural daylight throughout the school day not only improves concentration and overall cognitive performance, but a little supplemental sunlight can also improve sleep, mental well-being, and other factors that contribute to a positive and productive college experience. The building's Guardian 275® single slope skylight from Major Industries allows students to socialize and study indoors while still soaking up the sun's many advantages. By diffusing the incoming daylight, the skylight's translucent panels also eliminate concerns of glare or hot spots that are common with standard glass skylights and make for an uncomfortable and unproductive study space for students.

For more information on how Major Industries can help bring light to your next higher education project in a way that saves the school money, enriches the well-being of students and staff members, and showcases the architect's skills, contact our Sales Team at 888-759-2678 or sales@majorskylights.com.

Source: www.necc.mass.edu/newsroom/2018/02/05/dimitry/



John R. Dimitry Building – NECC - Lawrence, MA,
Perry Dean Rogers Partners Architects, Guardian 275® Single Slope Skylight



MAJORSKYLIGHTS.COM
888-759-2678

APPLICATION GUIDE

CHOOSING THE RIGHT SYSTEM

Major's team of experts can help you find the right system for your needs and budget.

While utilizing natural light can have economic and health benefits, choosing the right daylighting system for a space is also an important consideration. Too much uncontrolled light can have a negative effect and cause eye strain, as well as annoying glare and hot spots, but in other situations, views to the outside or ventilation control is a primary need. Here are some general rules of thumb when considering a daylighting system from Major Industries:

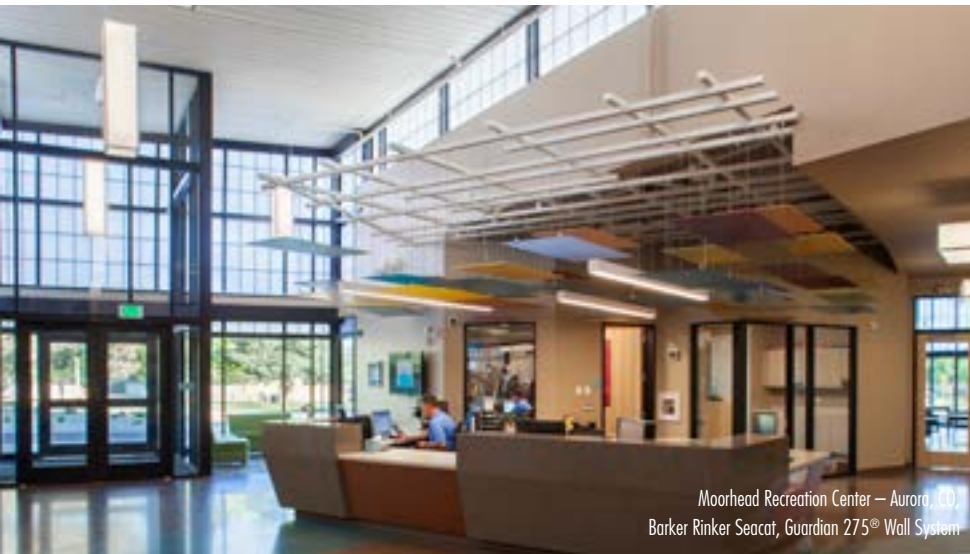
Multipurpose & Recreation Centers

Gyms / Community Centers / Churches

Sunlight can bring numerous benefits to athletes in sports facilities, and can make community or church members more comfortable during events and services. Translucent or mixed glazed systems add visual interest while controlling light penetration (glare/hot-spots). Consider utilizing a Clima-Tite™, Guardian 275® or LightBasic™ translucent panel system, an IlluminPC™ polycarbonate multi-wall system, or a mixed glazed system.



Euless Aquatic Center — Euless, TX
Kirksey Architecture,
Guardian 275® Skylights and Wall System with Veri-Lite™ grid
Images courtesy of Aker Imaging



Moorhead Recreation Center — Aurora, CO
Barker Rinker Seacat, Guardian 275® Wall System

Transitory & High Traffic Areas

Bank Lobby / Center Mall Court / Corridors

Transparent systems, like Auburn® glass skylights or mixed glazed systems, provide visual impact with unfettered views, and the detrimental effects of glare and hot-spots are minimized due to the transitory nature of occupants who use these areas. If excessive sunlight is a concern, translucent systems - like Clima-Tite™, Guardian 275® or LightBasic™ translucent panel systems, or an IlluminPC™ polycarbonate multi-wall systems - can help eliminate glare and distribute light throughout a space.

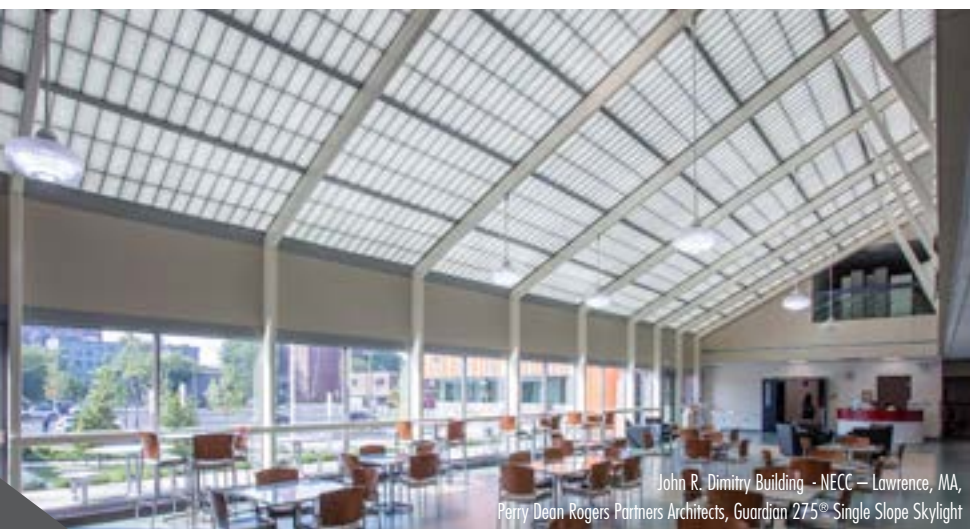
Utilitarian/Storage

Manufacturing Centers / Warehouses

Daylighting manufacturing and storage spaces can offer energy-saving benefits by limiting the need for artificial light sources, and can provide some privacy from prying eyes. Translucent glazing is generally lighter and less expensive than standard glass, and is a better choice for these applications. They also tend to be more impact resistant. IlluminPC™ polycarbonate multi-wall systems, value-engineered LightBasic™ or the more versatile Guardian 275® translucent panel system would work best.



Barksdale Air Force Base — Bossier City, LA,
Light-Basic™ Wall Systems



John R. Dimitry Building - NECC — Lawrence, MA,
Perry Dean Rogers Partners Architects, Guardian 275® Single Slope Skylight

Sedentary Activity – Work Spaces

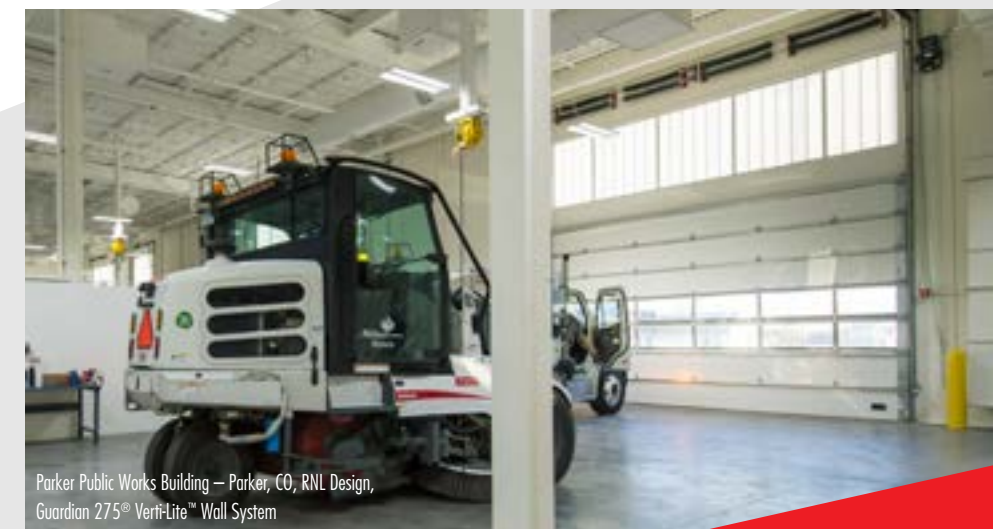
Eatery / Assisted Living Facility / Study Area

Translucent glazing is best - or transparent glazing with mechanical shading - as occupants spend significant time in these areas and will feel the negative effects of uncontrolled sunlight. Large spaces can benefit from natural light as it eliminates the need for some artificial light sources. Consider a Clima-Tite™, Guardian 275® or LightBasic™ translucent panel system, an IlluminPC™ polycarbonate multi-wall system, or a mixed glazed system with operable windows.

Municipal/Government

Maintenance Facilities / Water Treatment

Privacy, energy savings, thermal performance, blast protection and corrosion resistance can all be primary considerations for these spaces. Translucent glazing allows light penetration while blocking views from the exterior for built-in safety. Guardian 275® systems can also be configured for blast protection (along with other specialty configurations), and Clima-Tite™ pultruded fiberglass framed systems offer additional corrosion resistance.



Parker Public Works Building — Parker, CO, RNL Design,
Guardian 275® Veri-Lite™ Wall System



Carver Elementary School — Carver, MA, HMFH Architects, Inc
Guardian 275® Mixed Glazed Wall System,
Image © Ed Wonek

Warnock Hersey
WH



ICC
ES



Major Industries, Inc. reserves the right to improve products without notice as the result of ongoing R&D and/or third-party compliance. ©2020



Major Industries provides nationwide continuing education to Architects with its training sessions. Contact us today to find out more!



SKYLIGHTS, CANOPIES & TRANSLUCENT WALL SYSTEMS

MAJORSKYLIGHTS.COM

7120 STEWART AVE, WAUSAU, WI. 54401

SALES@MAJORSKYLIGHTS.COM / 888-759-2678 / 715-842-4616

